



Lighting Design  
**and consulting**



# Specialist lighting services for retailers

**Aglo Systems assists retailers through the strict lighting guidelines of shopping centres with a seamless, end-to-end lighting solution.**

A growing number of shopping centres, including those managed by Westfield, Centro, Stocklands and GPT Group, have implemented comprehensive lighting criteria and documentation requirements for their retailers to maintain the lighting quality throughout their properties.

Aglo Systems have the specialist skills to fulfil these requirements, which include:

- Lighting Design
- Lighting Layout (RCP - Reflected Ceiling Plan) Documentation
- Switching Layout Documentation
- BCA Calculations
- Dialux Modelling
- Fitting Schedules

Further to these services, we also supply all the lighting fixtures, as well as provide creative design, engineering and manufacturing for bespoke luminaires. We truly are a one-stop lighting service.

Shopping centres also prescribe comprehensive requirements for the light fittings, which include bans on the use of older technologies such as halogen, T8 fluorescent, and magnetic gear.

We encourage all clients to upgrade to the most environmentally friendly and economical LED technology where possible. Some centres have extra requirements such as high CRI (Colour Rendering Index) >85 fittings. We can supply CRI 90-95 fittings for these centres, and for any other store on request.

## Why Use High CRI?

The Colour Rendering Index (CRI) indicates the ability of a light source to accurately render all frequencies of its colour spectrum when compared to a perfect reference light such as incandescent or daylight. It is rated on a scale from 1-100. The lower the CRI rating, the less accurately colours will appear.

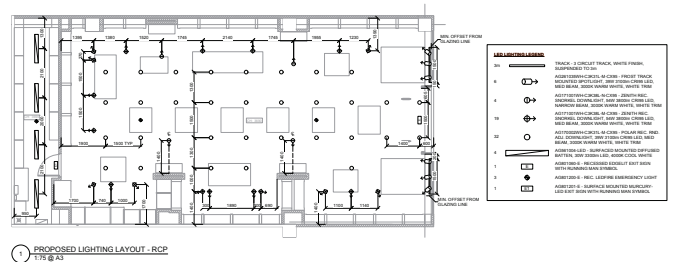
A high CRI rating is important in a retail situation to show the products' most accurate, natural colouring. For example a tie shop, cosmetics counter or art gallery would greatly benefit from a high CRI rating so that all colours appear as naturally as possible. However, a book shop or pet shop would not require such colour accuracy.



## The Lighting Design Process

We can work directly with you—the retailer—or through your nominated architect, shop fitter or interior designer. We will collaborate with you to create a brief covering the lighting requirements, aims, necessary hero displays and emergency illuminated signage needs.

We will also discuss the type of product on display, the desired ambience and gain a full understanding of the type of retail space before putting together a proposed lighting layout, also known as a Reflected Ceiling Plan (RCP).



With the lighting layout, we provide the BCA (Building Code of Australia) calculations to indicate that the proposed lighting complies with BCA J6 (wattage by area) requirements.

### Maximum illumination wattages by area

Job Name: Project No AD1408MA  
 Location: Centre, NSW Date: 22.08.14  
 Drawing Reference: AG-01 BCA Issue: \*  
 Note:

Room Name	Usage	Max IPD	Area	Perimeter	Ceiling Height	Room Aspect Ratio	Maximum room wattage	Design Wattage	Complies
Retail	Retail Space	22	139	49.8	3.69	0.75	4066		
Store	Store	8	16.5	22.9	3.69	0.57	234		
<b>Total</b>			<b>155.5</b>				<b>4299</b>	<b>3146</b>	<b>YES</b>

Ceiling Lighting Fitting	Allowance	Retail		Store Room	
		Qty	W	Qty	W
AG281035WH-C3K31L-M-CX95 - FROST TRACK MOUNTED SPOTLIGHT, 39W 3100lm CR95 LED, MED BEAM, 3000K WARM WHITE, WHITE TRIM	43	6	258	0	0
AG171001WH-C3K38L-N-CX95 - ZENITH REC. SNORKEL DOWNLIGHT, 54W 3100lm CR95 LED, NARROW BEAM, 3000K WARM WHITE, WHITE TRIM	60	4	240	0	0
AG171001WH-C3K38L-M-CX95 - ZENITH REC. SNORKEL DOWNLIGHT, 54W 3100lm CR95 LED, MED BEAM, 3000K WARM WHITE, WHITE TRIM	60	19	1140	0	0
AG170002WH-C3K31L-M-CX95 - POLAR REC. RND. ADJ. DOWNLIGHT, 39W 3100lm CR95 LED, MED BEAM, 3000K WARM WHITE, WHITE TRIM	43	32	1376	0	0
AG581004-LED - SURFACED MOUNTED DIFFUSED BATTEN, 30W 3000lm LED, 4000K COOL WHITE.	33	0	0	4	132
<b>Total</b>			<b>3014</b>		<b>132</b>

On request, we can also provide a switching layout for installation; Dialux Calculations and False Colour Rendering models in 3D to indicate the proposed lumen levels; and light fitting schedules.

Once you approve the lighting layout and corresponding quote, we will assemble and ship the fittings nationwide. We can even arrange warehousing of items for extensive roll outs.



Vodafone, nationwide



Kathmandu, nationwide



Amcal Chemist, Victoria



Harris Scarfe, nationwide lighting retrofit



Colette by Collete Hayman, nationwide



Henry Bucks, Melbourne



Optus, 170 store nationwide rollout

# Aglo Systems provides commercial, retail and industrial LED lighting solutions Australia wide.

Aglo Systems are specialists in lighting design and supply of LED highbays, downlights and floodlights for retailers, factories, offices and warehouses. We are an Australian owned company providing an extensive end-to-end Project Lighting Solution starting with design and consultation through to manufacture, supply and installation.

Our Lighting Efficiency Upgrades department performs lighting audits and retrofit upgrades (leveraging government rebates) to reduce your power bills and improve the overall lighting quality.

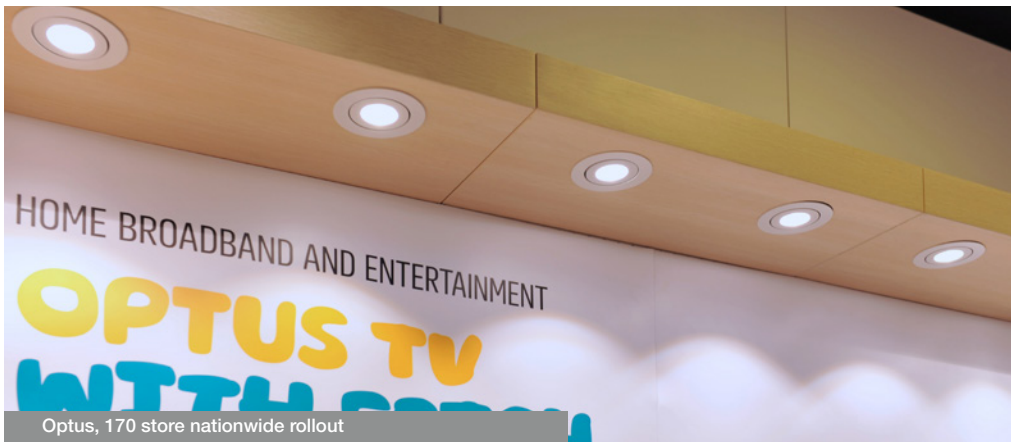
The Custom Design and Manufacturing department works in partnership with architects, shopfitters, consultants & lighting designers to engineer and create unique luminaires — and practically anything else!

With many years of experience, our dedicated team strives to provide a streamlined service with the finest attention to detail while maintaining competitive prices. By combining the latest technologies and highest quality components on the international market with in-house assembly, Aglo Systems guarantees high end products and an extensive range.

We are your one-stop lighting specialist.



Harris Scarfe, nationwide lighting retrofit



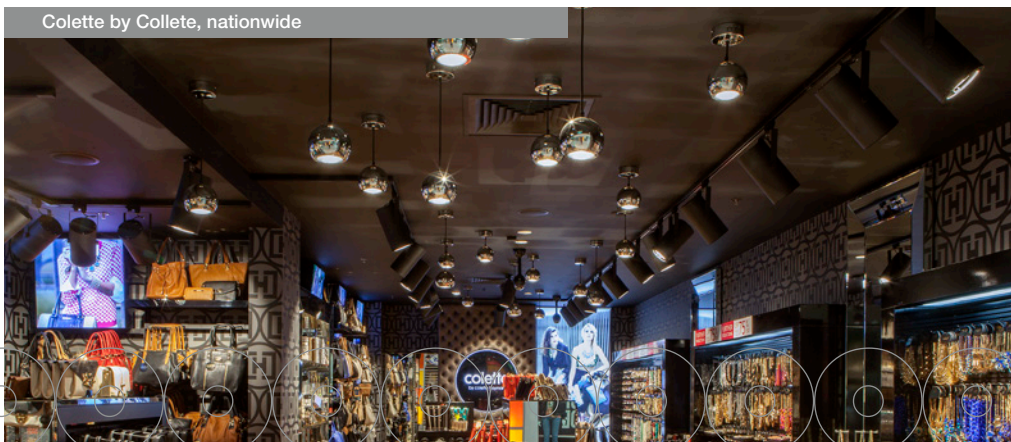
Optus, 170 store nationwide rollout



Kathmandu, nationwide



Victoria Station, nationwide



Colette by Collete, nationwide



Lighting Council  
AUSTRALIA  
MEMBER

[sales@aglosystems.com.au](mailto:sales@aglosystems.com.au)

Tel 03 9551 3748

[aglosystems.com.au](http://aglosystems.com.au)

